

Thank you...

Many thanks for purchasing PCE instruments, welcome to use the Graph Software.

Note: the measuring mode must be RT (real-time mode)

1 Hardware requirements

Graph Software is compatible with XP or later operating system.

2 Setup

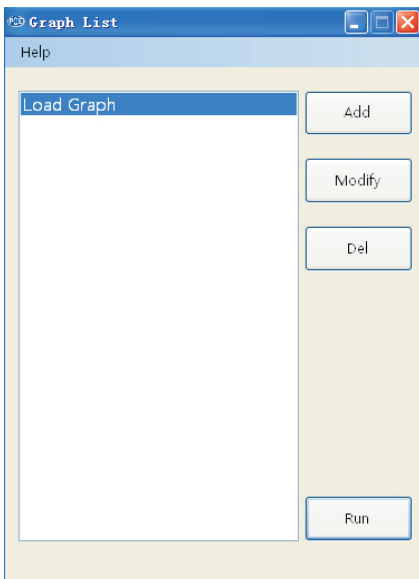
Before software installation, please make sure that the Online setting of instruments is ON. For setting details, see the product user's guide.

3 Driver Installation

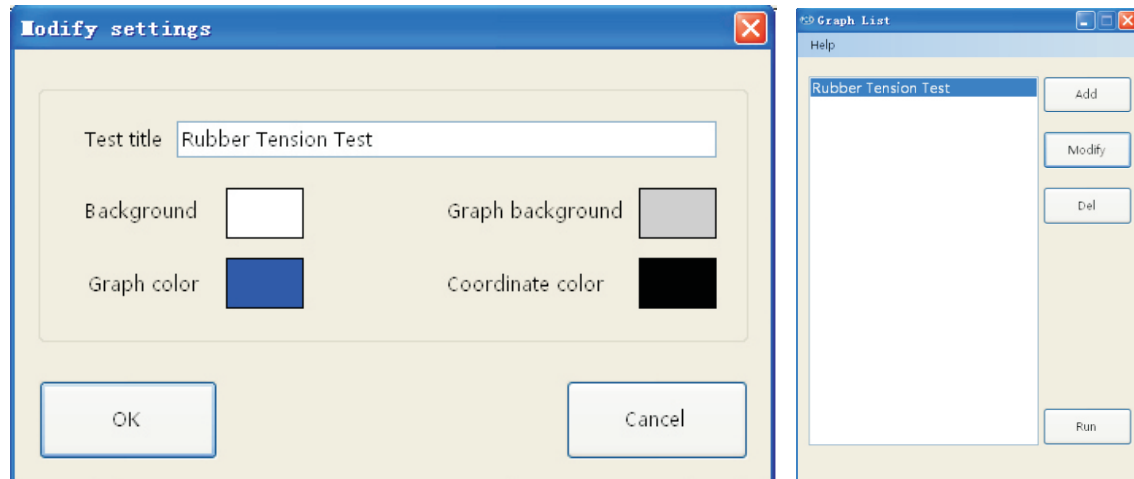
Insert the installation CD into the computer's CD-ROM drive. If AutoRun is enabled on the computer, the setup program will run automatically. If not, the setup program can run manually.

4 Software Operation

After installation, open the 'Graph Test Software' and it will display the first interface below-Graph List. There is a default test graph name-Load Graph.

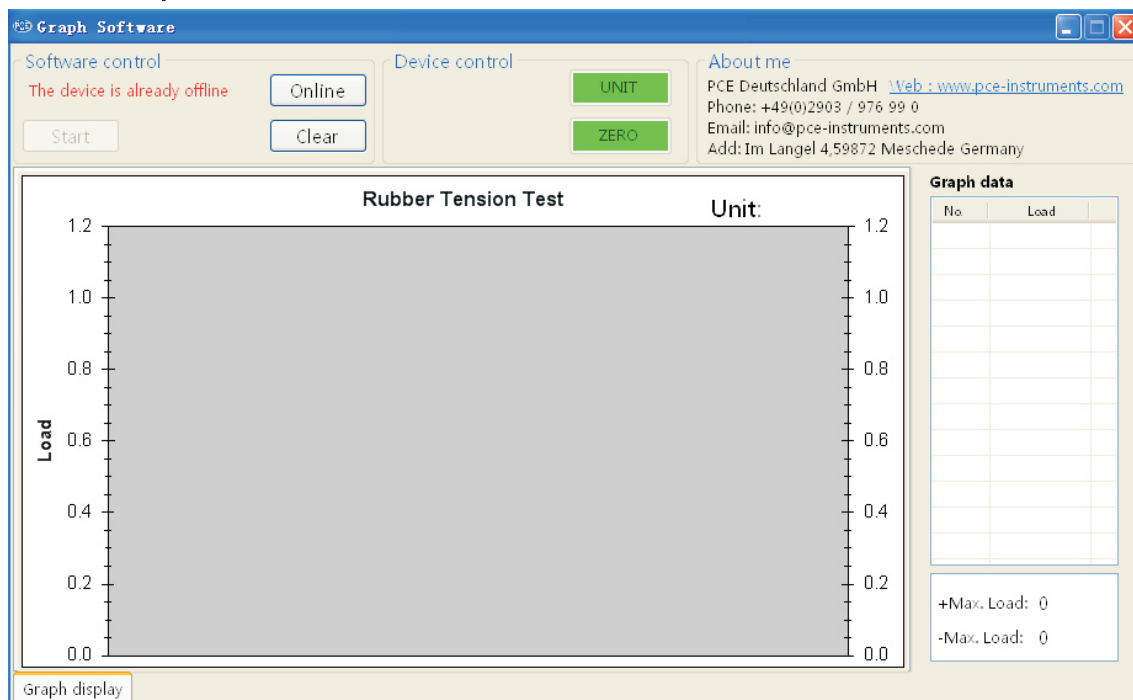


Then click 'Modify' button to enter the interface below-Modify setting (see the page 2) and modify the test title according to the real test (such as Rubber Tension Test) and choose the background and graph color. Then press 'OK' button to back the interface-Graph List (see the page 2).



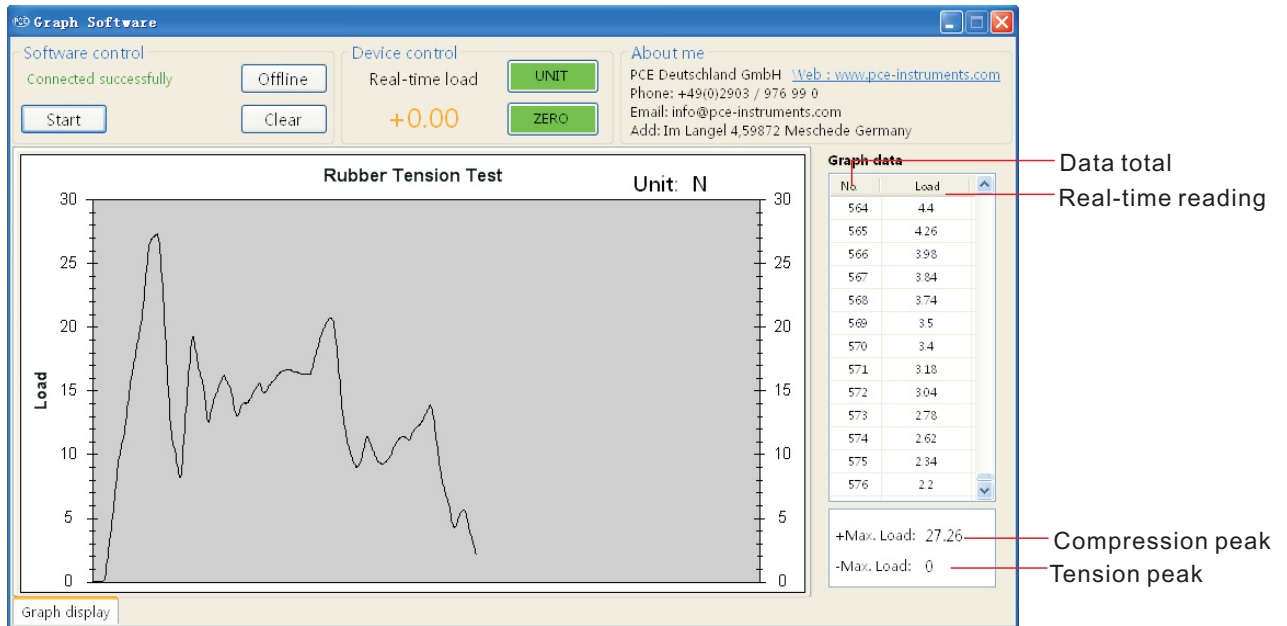
Label	Description
Test Title	Set the name as the real test
Background	Set the color of the whole background
Graph Background	Set the color of graph zone
Graph color	Set the color of the graph
Coordinate color	Set the color of the coordinate

The modified test title will be displayed, then mark it and click 'Run' to the interface below-Graph Software.



In the Software control, Click 'Online' to connect the device(instrument). If connected successfully, It will display 'connected successfully' in the Software control and the real-time load in the Device control.

Then click 'Start' button to start graph, see the following picture.



Label	Description
Online/Offline	Connect/disconnect the device(instrument)
Start	Start a graph test
Clear	Clear the displayed graph
Unit	Change the unit on the software/instrument
Zero	Zero the real-time reading on the software/instrument

After finishing test, the graph and real-time graph data can be exported. The saved graph is also imported to the software for viewing again.