



User Manual

PC Software PCE-322A



User manuals in various languages (deutsch, français, italiano, español, português, niederlands, türk, polski, русский, 中文) can be found by using our product search on: www.pce-instruments.com

last change: 14 February 2024
v1.1

Contents

1	Safety notes.....	1
2	System requirements	1
3	Installation	2
3.1	Download software.....	2
3.2	Installing the software.....	3
4	Transfer measured data to the software	4
5	Live measurement with the software	6

1 Safety notes

Acquaint yourself with the operation of the measuring device before using it in combination with the PC software. For this purpose, use the instruction manual which comes with your PCE product. All safety notes from the device's manual have to be observed as well when the device is used with this software.

The device and the software may only be used by qualified personnel. Damage or injuries caused by non-observance of the manuals are excluded from our liability and not covered by our warranty.

We do not assume liability for printing errors or any other mistakes in this manual.

We expressly point to our general warranty terms which can be found in our general terms of business.

If you have any questions please contact PCE Instruments. The contact details can be found at the end of this manual.

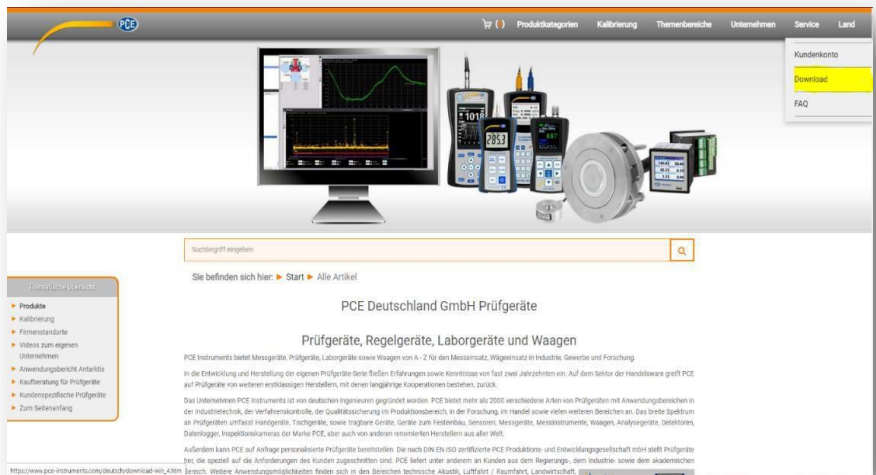
2 System requirements

- Operating system Windows 7 or higher
- USB port (2.0 or higher)
- An installed .NET framework 4.0
- A minimum resolution of 800x600 pixels
- Optional: a printer
- Processor with 1 GHz
- 4 GB RAM recommended
- CD ROM drive

3 Installation

3.1 Download software

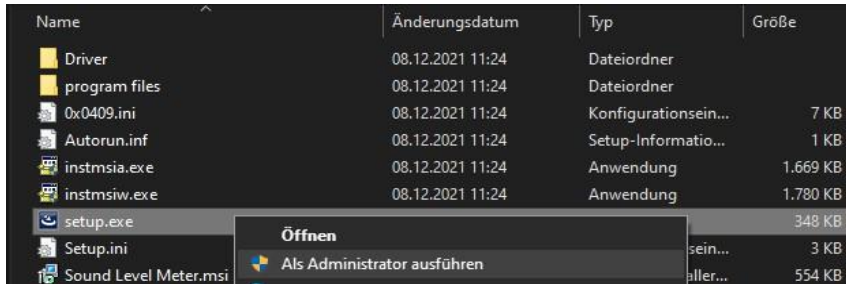
- Start your browser (Edge, Chrome, Firefox, ...).
- Search for the company PCE Deutschland GmbH and click on the first search result
- Once the website has loaded, click on Service in the top right-hand corner and select Download.



- To display the software for the PCE-322A, simply enter PCE-322A in the search field.
- You will now be shown 4 downloads. The third download is for the latest model of the PCE-322A (sold from 2017).
- Simply click on the image or text and the software download will start.

3.2 Installing the software

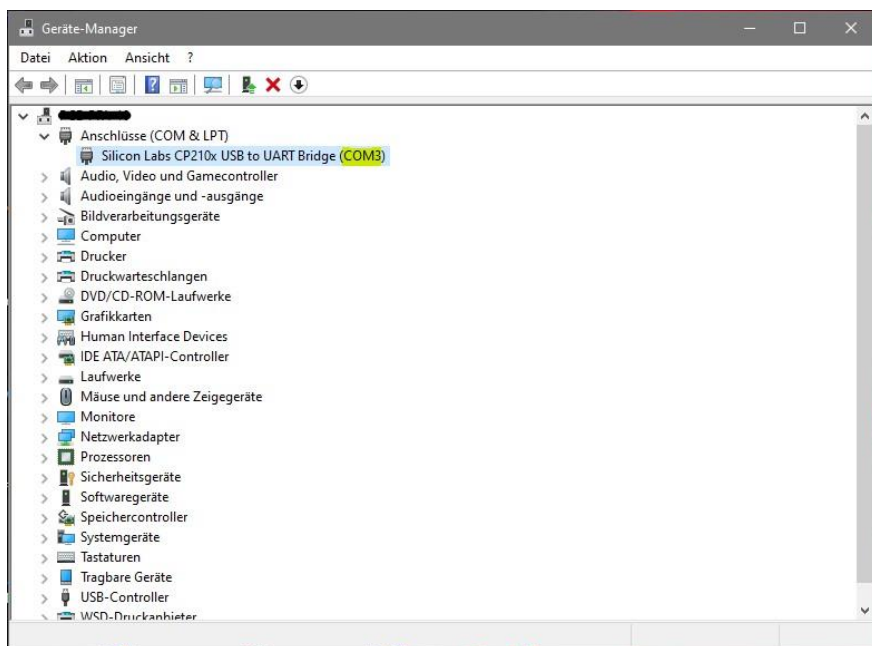
- Once you have downloaded the software, you will find a file called "PCE-322A-2020.zip" in the download folder of your Windows Explorer. Select this file and right-click on it.
- In the window that opens, click on "Extract all ..." and confirm the next window with "Extract".
- A new folder has now been created. Open this folder and follow the folder structure until you reach the "Sound Level Meter V3.4.2" folder.
- Once in the folder, right-click on the setup.exe file and select "Run as administrator".



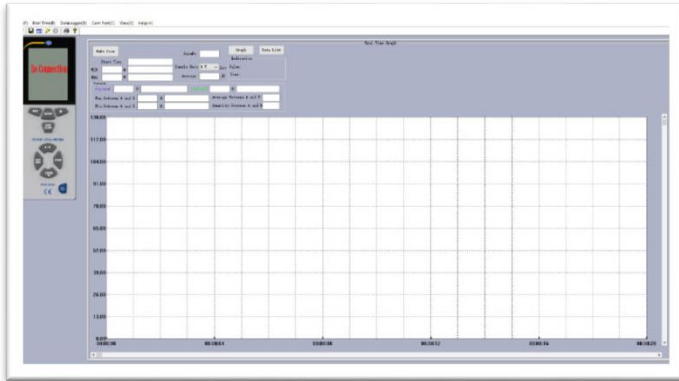
- Then follow the installation wizard until the software is fully installed.

4 Transfer measured data to the software

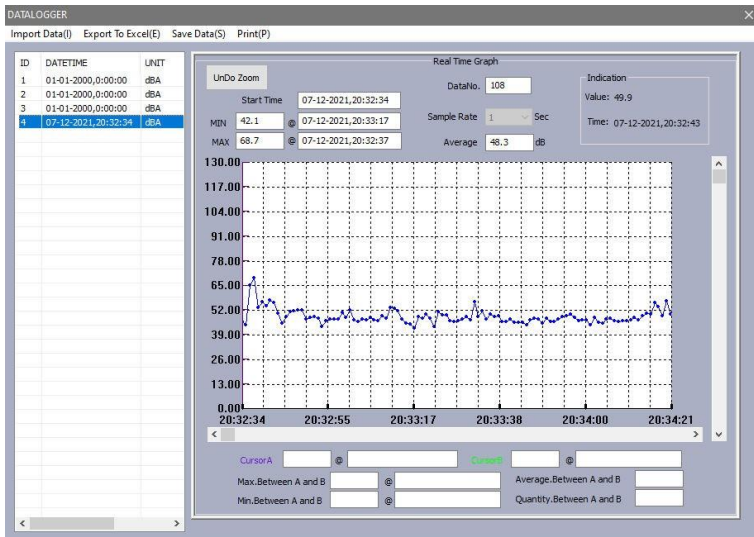
- First connect the measuring device to the computer using the USB cable supplied.
- Once the measuring device is connected to the computer by cable, open the Device Manager in Windows. To do this, right-click on the Windows icon in your taskbar.
- In the new window, click on the "Device Manager" item.
- The device should be displayed as a COM port under the "Ports" category. Make a note of the COM port number.
- Then start the "Sound Level Meter" software.
- At the top of the software, you will find the COM port (C) item. Click on it and select "Manual". Set the COM port that was displayed in the device manager.
- If "No Connection" is displayed in the software in the illustrated measuring device, you must press the setup key on the measuring device once to activate the USB interface.
- Then start the "Sound Level Meter" software.



- At the top of the software, you will find the COM port (C) item. Click on it and select "Manual". Set the COM port that was displayed in the device manager.
- If "No Connection" is displayed in the software in the illustrated measuring device, you must press the setup key on the measuring device once to activate the USB interface.






- If the display of the measuring device and the display shown in the software are the same, you can read out the measurement data from the measuring device. To do this, click on "Datalogger(D)" at the top of the software.
- In the newly displayed window, all measurements are shown in the table on the left. You can then select the respective measurement by double-clicking on it.



- If you want to save a measurement series to your computer, you can click on "Save Data(S)" at the top of the window and save the measurement series.

5 Live measurement with the software

- Carry out items 1-5 exactly as described under the heading "Transfer measured data to the software".
- To start a live measurement, you can press the flash  symbol under the functions and a live measurement will be started.
- If you want to end the live measurement again, simply press the  stop symbol.
- To save a live measurement, press the save symbol at the top . 

PCE Instruments contact information

Germany

PCE Deutschland GmbH
Im Langel 26
D-59872 Meschede
Deutschland
Tel.: +49 (0) 2903 976 99 0
Fax: +49 (0) 2903 976 99 29
info@pce-instruments.com
www.pce-instruments.com/deutsch

United Kingdom

PCE Instruments UK Ltd
Trafford House
Chester Rd, Old Trafford
Manchester M32 0RS
United Kingdom
Tel: +44 (0) 161 464902 0
Fax: +44 (0) 161 464902 9
info@pce-instruments.co.uk
www.pce-instruments.com/english

The Netherlands

PCE Brookhuis B.V.
Institutenweg 15
7521 PH Enschede
Nederland
Telefoon: +31 (0)53 737 01 92
info@pcebenelux.nl
www.pce-instruments.com/dutch

France

PCE Instruments France EURL
23, rue de Strasbourg
67250 Soultz-Sous-Forêts
France
Téléphone: +33 (0) 972 3537 17
Numéro de fax: +33 (0) 972 3537 18
info@pce-france.fr
www.pce-instruments.com/french

Italy

PCE Italia s.r.l.
Via Pesciatina 878 / B-Interno 6
55010 Loc. Gragnano
Capannori (Lucca)
Italia
Telefono: +39 0583 975 114
Fax: +39 0583 974 824
info@pce-italia.it
www.pce-instruments.com/italiano

United States of America

PCE Americas Inc.
1201 Jupiter Park Drive, Suite 8
Jupiter / Palm Beach
33458 FL
USA
Tel: +1 (561) 320-9162
Fax: +1 (561) 320-9176
info@pce-americas.com
www.pce-instruments.com/us

Spain

PCE Ibérica S.L.
Calle Mula, 8
02500 Tobarra (Albacete)
España
Tel. : +34 967 543 548
Fax: +34 967 543 542
info@pce-iberica.es
www.pce-instruments.com/espanol

Turkey

PCE Teknik Cihazları Ltd.Şti.
Halkalı Merkez Mah.
Pehlivan Sok. No.6/C
34303 Küçükçekmece - İstanbul
Türkiye
Tel: 0212 471 11 47
Faks: 0212 705 53 93
info@pce-cihazlari.com.tr
www.pce-instruments.com/turkish

Denmark

PCE Instruments Denmark ApS
Birk Centerpark 40
7400 Herning
Denmark
Tel.: +45 70 30 53 08
kontakt@pce-instruments.com
www.pce-instruments.com/dans

User manuals in various languages (deutsch, français, italiano, español, português, nederlands, türk, polski, русский, 中文) can be found by using our product search on: www.pce-instruments.com

Specifications are subject to change without notice.