

# AC/DC Magnetic Meter

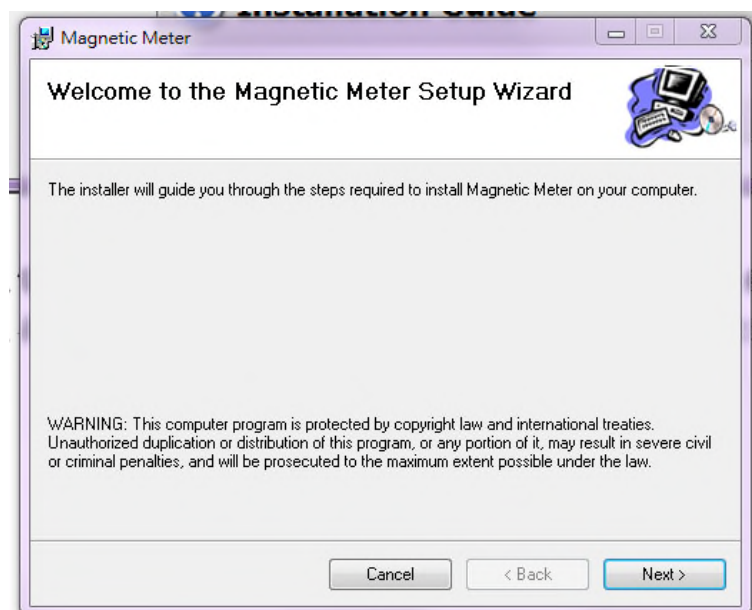
## Software User's Manual

### 1. Software Installation Procedure

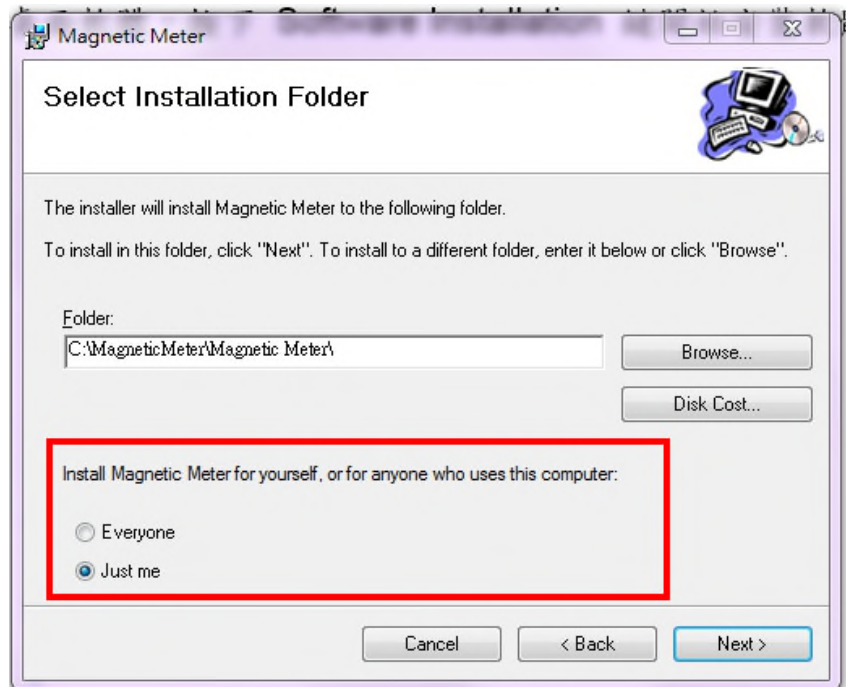
- 1.1 Put CD into CD/DVD driver. The Autorun.exe should be automatic execution if not, open the main folder of CD and double click Autorun.exe.



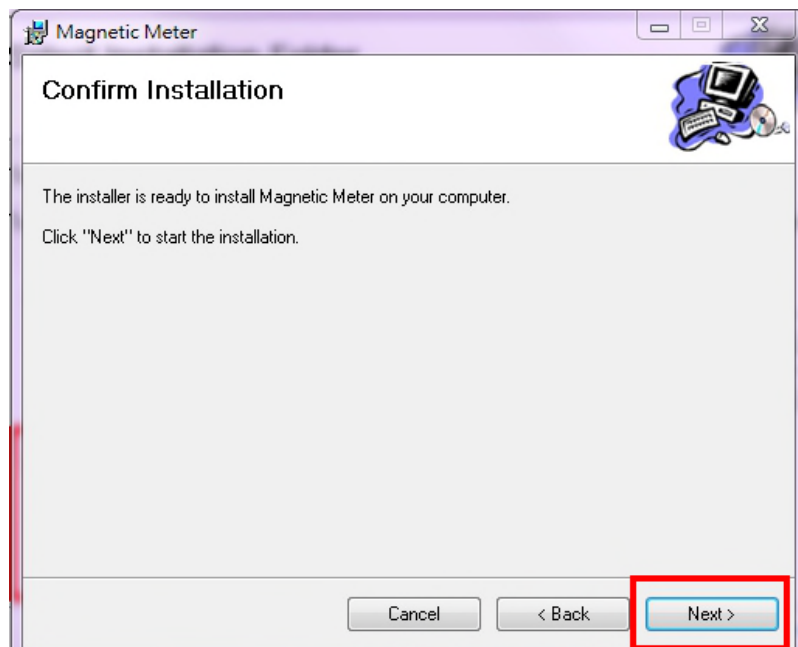
- 1.2 Check your computer system to install vc\_redist.x64 or vc\_redist.x86 program.
- 1.3 Install desktop software, press Software Installation to start installation.



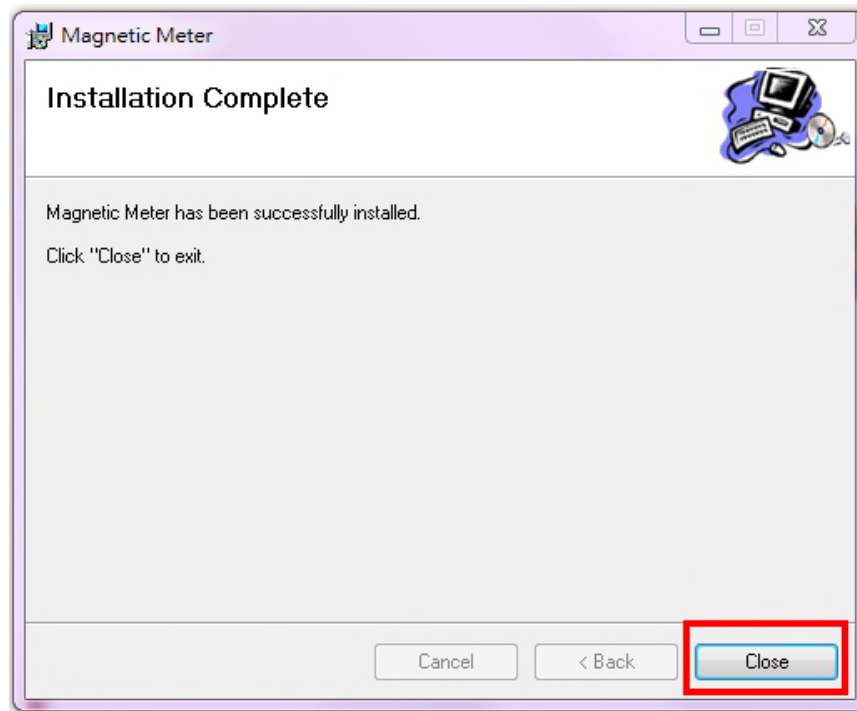
- 1.3.1 Choose the location to install (default location is C:\MagneticMeter\Magnetic Meter\), the red frame set the user of using software.



- 1.3.2 press Next button to keep going installation.

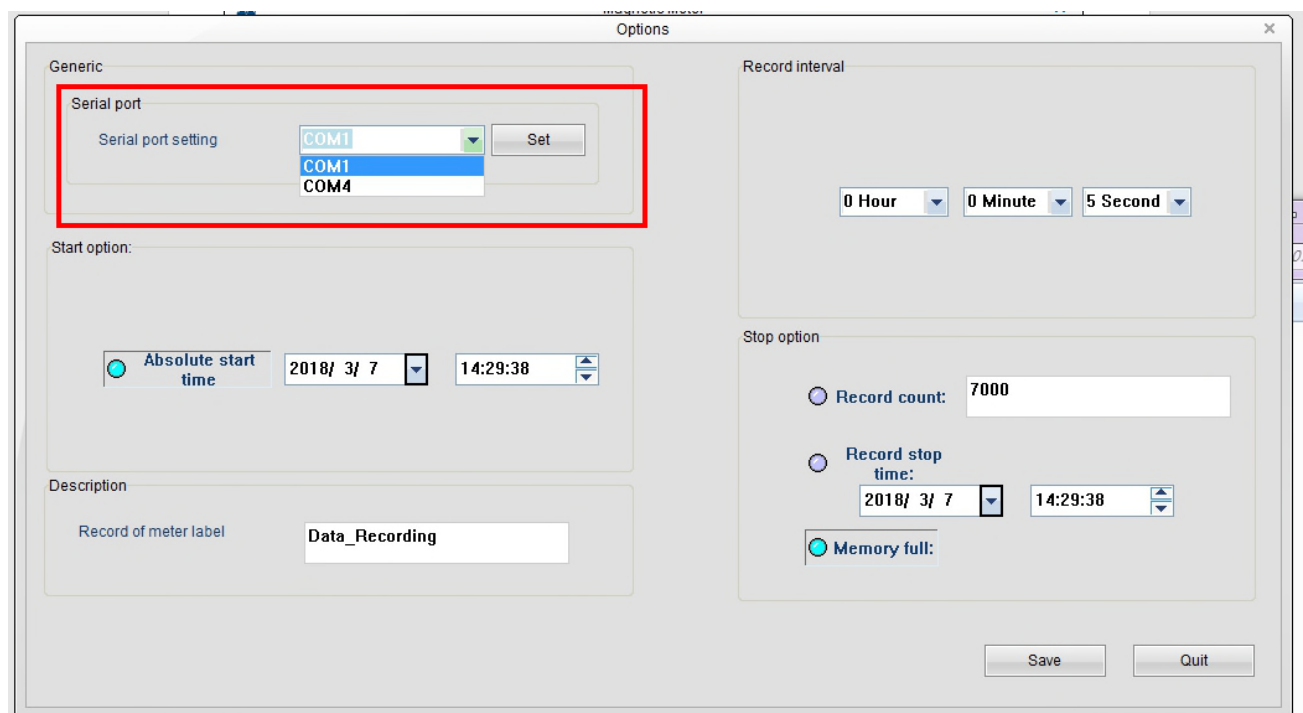


- 1.3.3 press Close button to finish installation and crate a desktop shortcut.

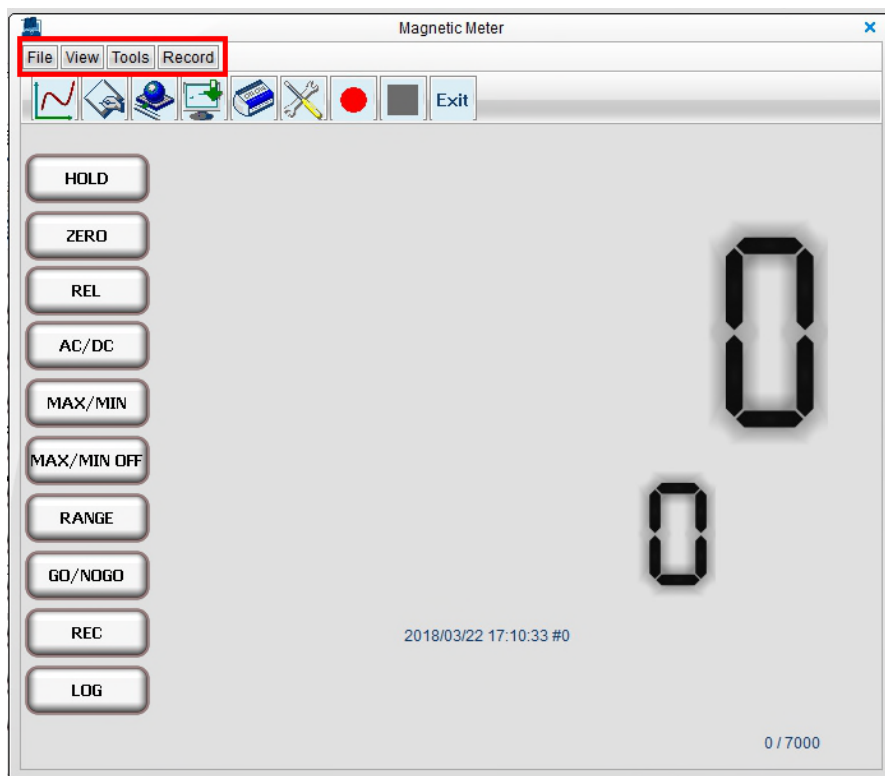


## 2. Software Operation Instructions

- 2.1 Set connection with meter: Plug in USB wire with meter and execute software. But find the USB Com Port first, and press Set button to connect.



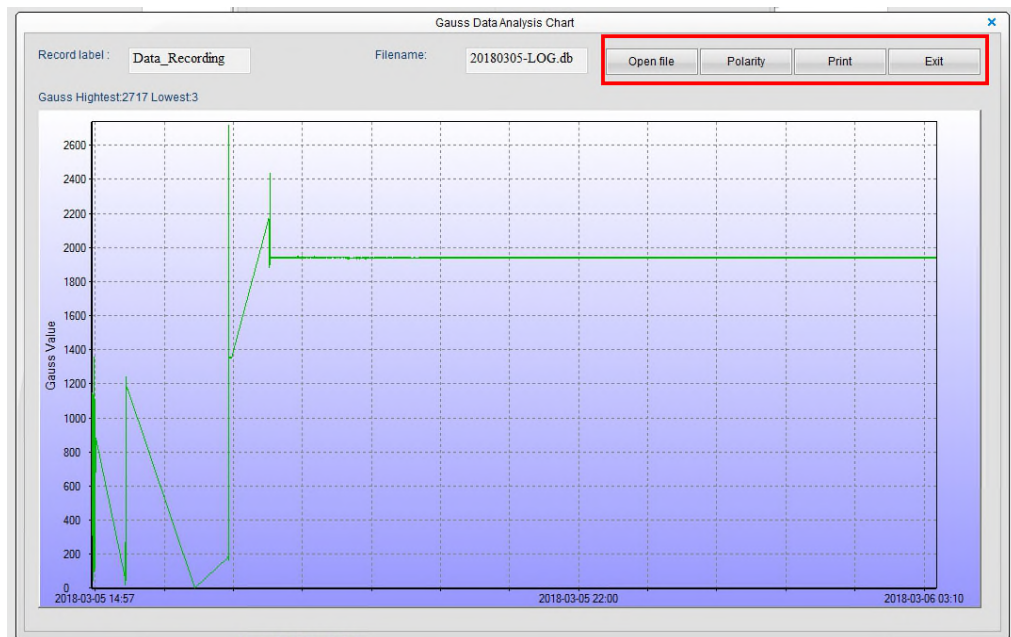
## 2.2 Software Operation :



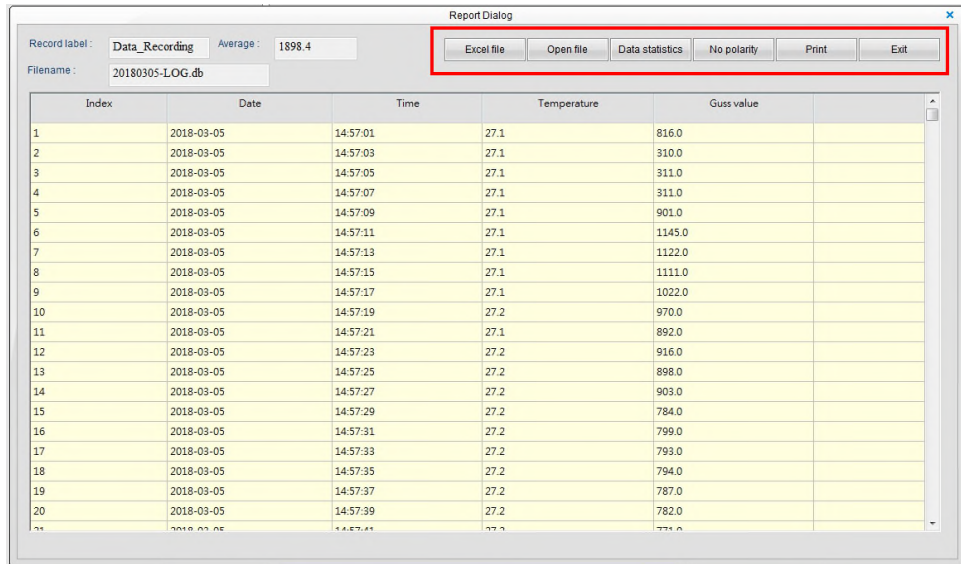
2.2.1 Press File button: Press to choose **convert Excel file or exit**.

2.2.2 Press View button: Press to show **Graphic or Report**.

1. The graphic includes four functions. (**open file\polarity\print\exit**)



2. The report includes six functions. (convert Excel file\open file\data statistics\show polarity( no polarity )\print\exit)



Report Dialog

Record label: Data\_Recording Average: 1898.4

Filename: 20180305-LOG.db

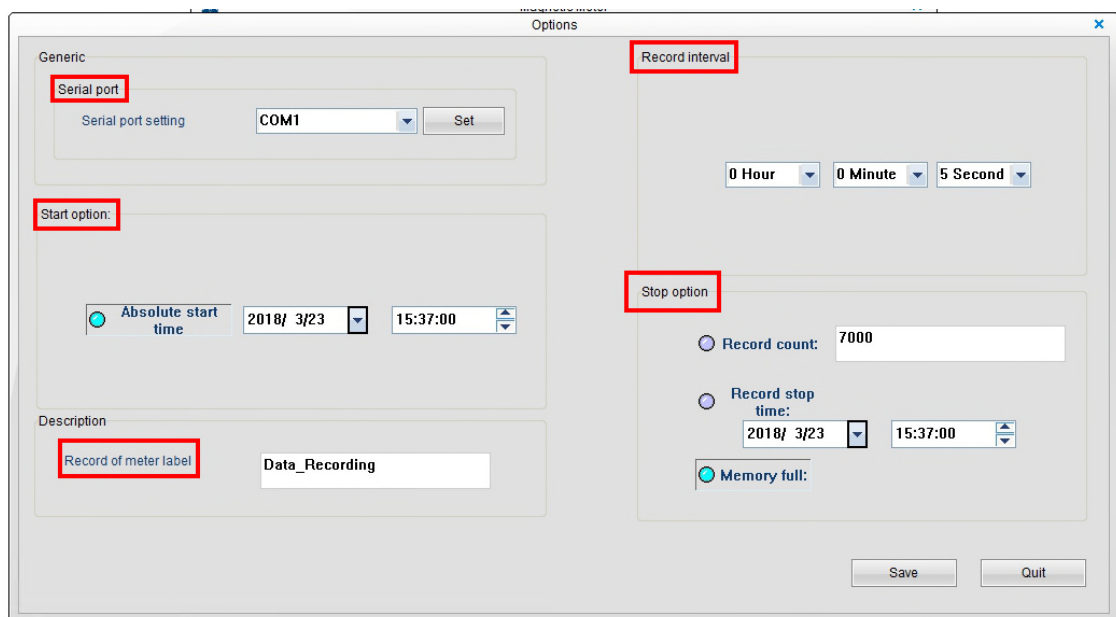
Index	Date	Time	Temperature	Guss value
1	2018-03-05	14:57:01	27.1	816.0
2	2018-03-05	14:57:03	27.1	310.0
3	2018-03-05	14:57:05	27.1	311.0
4	2018-03-05	14:57:07	27.1	311.0
5	2018-03-05	14:57:09	27.1	901.0
6	2018-03-05	14:57:11	27.1	1145.0
7	2018-03-05	14:57:13	27.1	1122.0
8	2018-03-05	14:57:15	27.1	1111.0
9	2018-03-05	14:57:17	27.1	1022.0
10	2018-03-05	14:57:19	27.2	970.0
11	2018-03-05	14:57:21	27.1	892.0
12	2018-03-05	14:57:23	27.2	916.0
13	2018-03-05	14:57:25	27.2	898.0
14	2018-03-05	14:57:27	27.2	903.0
15	2018-03-05	14:57:29	27.2	784.0
16	2018-03-05	14:57:31	27.2	799.0
17	2018-03-05	14:57:33	27.2	793.0
18	2018-03-05	14:57:35	27.2	794.0
19	2018-03-05	14:57:37	27.2	787.0
20	2018-03-05	14:57:39	27.2	782.0

Excel file Open file Data statistics No polarity Print Exit

### 2.2.3 Press Tools button:

Press to choose **Connect\Options\Download\Erase**.

- Press Tools\Options function:



Options

Generic

Serial port: COM1

Serial port setting: COM1 Set

Start option:

Absolute start time: 2018/ 3/23 15:37:00

Description

Record of meter label: Data\_Recording

Record interval:

0 Hour 0 Minute 5 Second

Stop option:

Record count: 7000

Record stop time: 2018/ 3/23 15:37:00

Memory full:

Save Quit









### 2.2.4 Press Record button: Press to choose **Start\Stop** to record measured data.



### 2.2.5 Shortcuts keys :



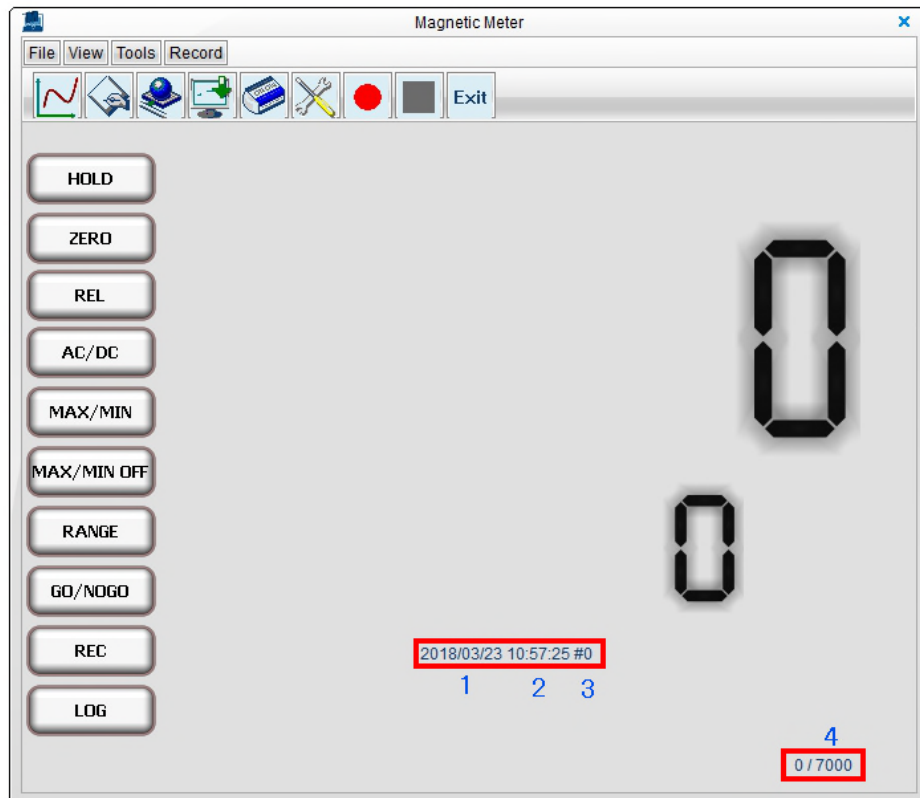
- a →Graphic.
- b →Report.
- c →Connect.
- d →Download measured data.
- e →Erase measured data.
- f →Options.
- g →Start to record measured data.
- h →Stop to record measured data.
- i →Exit.

### 2.2.6 Synchronous button with meter :

1.  : Press to lock the display on the meter, the HOLD shown on top of the screen.
2.  : Press to set zero, the ZERO shown on top of the screen.
3.  : Press to show Relative function, the REL shown on corner of the screen.
4.  : Press to show AC/DC function, the ~ symbol shown on top of the screen.
5.  : Press to show MAX/MIN function, the MAX/MIN shown on the corner of the screen.
6.  : Press to close MAX/MIN function, the MAX/MIN disappeared on the screen.
7.  : Press to change the Range function, auto/manual decimal point/manual integer.
8.  : Press to start alarm function.

9. : Press to start recording measured data, the REC shown on side of the screen.
10. : Press to start Data Log function, the LOG shown on the screen.

### 3. Other display instructions



- 1 → Date displayed.
- 2 → Time displayed.
- 3 → The numbers of real-time recording.
- 4 → 0(saved data of meter)/7000(total data of meter).